



RGVGRC News

May 2012



Another Successful Specialty—May 11, 2012
Judges—Pluis Davern & Patricia Kelley
Lots & Lots of Pretty Golden!!!



Trophy Table
Dog Bone Cutting Boards



We collected \$345 on the raffle.



Raffle Table

HAPPY BIRTHDAY



“Liza” Williams—May 2nd

Jane Sageser—May 4th

“Bling” Bloom—May 7th

“Links” Bloom—May 7th

“Rhett” Chappelle—May 7th

“Ginger” Archer—May 11th

“Tara” Nichols—May 17th

Barbara Mitchell—May 18th

“Tad” Sageser—May 20th

Happy Birthday to All of You!!!!

Tribute Table
to Linda Atwell
Jan. 19, 1945— March 13, 2012



It was so nice to see Hugh Atwell...we are so glad he could come out for the day. Thanks to Hugh for presenting the ribbons and trophies for Best of Breed.



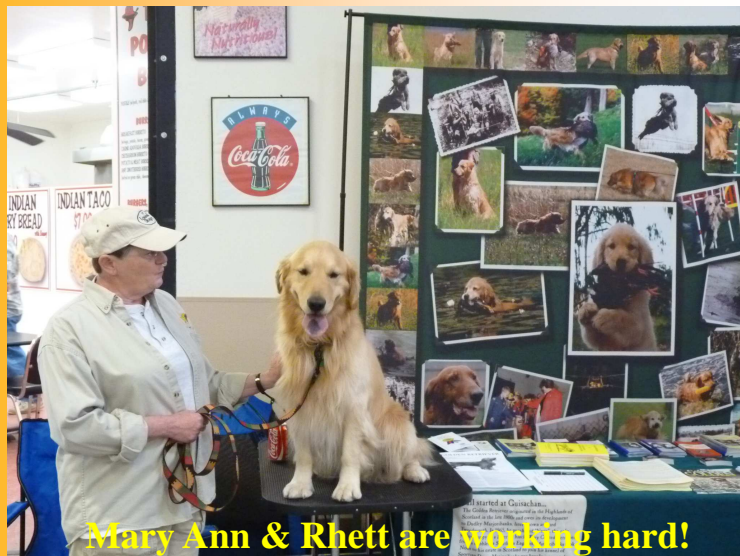
Thanks to everyone who came out and worked at the Specialty...it was another wonderful show because of all of you! We may be a small group, but we get the job done!!

- Thanks Kate & Don for your donation of two raffle baskets. Sorry you could not be at the Specialty. We missed you....
- Thanks Mary Ann Bosworth for your donation to the raffle, bringing ice/cooler, cookies, etc. Thanks especially for helping setting up and breaking down, you're always there when we need you. We are all so grateful for the wonderful job you did as Steward. Thanks for everything you do—good job!
- Lynn Finley could not get off work but would have been there to help if she could have gotten off. We missed you Lynn! Thanks for your donation to the raffle.
- Janet Robinson...she's always there for the Specialty and we really appreciate all you did helping with the food and raffle. Thanks also for your donation to the raffle. See you next Specialty!
- Jane Sagesar—It was great to see Jane! Thank you so much for Stewarding and doing such a wonderful job. Much appreciated! Thanks again...
- Thanks to Ann Wilson for donating to the raffle and all your help with food and breaking down at the end of the Specialty. Thanks for coming to help!!!
- Patricia Williams is someone you can always count on...thanks for your two donations to the raffle and helping with Stewarding. Thanks for all you do! Good Job...thanks!!!!
- Big thanks to Dianne Uzdawinis for Show Chair. Thanks for your donation to the raffle. Thanks for getting the trophies, food, flowers, etc. Thank you for always handling the paper work for the Specialty and communicating with Judges and Judges dinner reservations. Good Job! Thanks for everything you do...
- Gin Chappelle—Donation to raffle. Preparing and bringing all the essential supplies for the Specialty. Preparing the tribute table to Linda Atwell and writing the dedication to her. Picking up parking passes and mailing same. Acquiring Judges gifts & cards. Set up and break down.
- Mel Zownir—Thanks to Mel for coming to deliver the tribute to Linda Atwell and bringing that heavy PA equipment & music. What a wonderful delivery - Great Job Mel!!

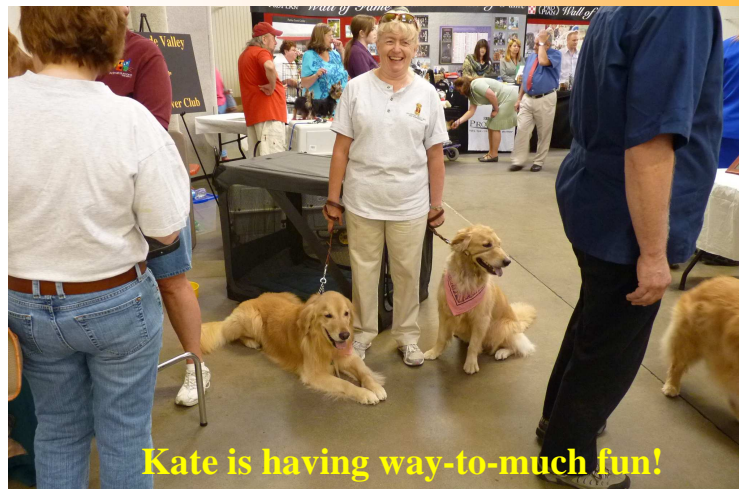
Meet the Breed

May 12, 2012

Thank you to all who came out to work the booth.



Mary Ann & Rhett are working hard!



Kate is having way-to-much fun!



Buster, Anne & Dianne are working it...



Patricia is busy with Dr. Roberts.

Flying Star Fund Raiser held on April 25, 2012 was a big success! We made \$386 from Flying Star and received \$45 in donations; total of \$431.00. Thanks for supporting this fun and profitable event for the club. Good job Kate...getting this organized for us! We already have a date in October to do this again. It's easy \$\$\$ for the Club. Thanks again to all who came out.

